



Capability Presentation

October 2017



Table of Content



Corporate Presentation

Capabilities & Assets

Track Record

Section 1: Corporate Presentation



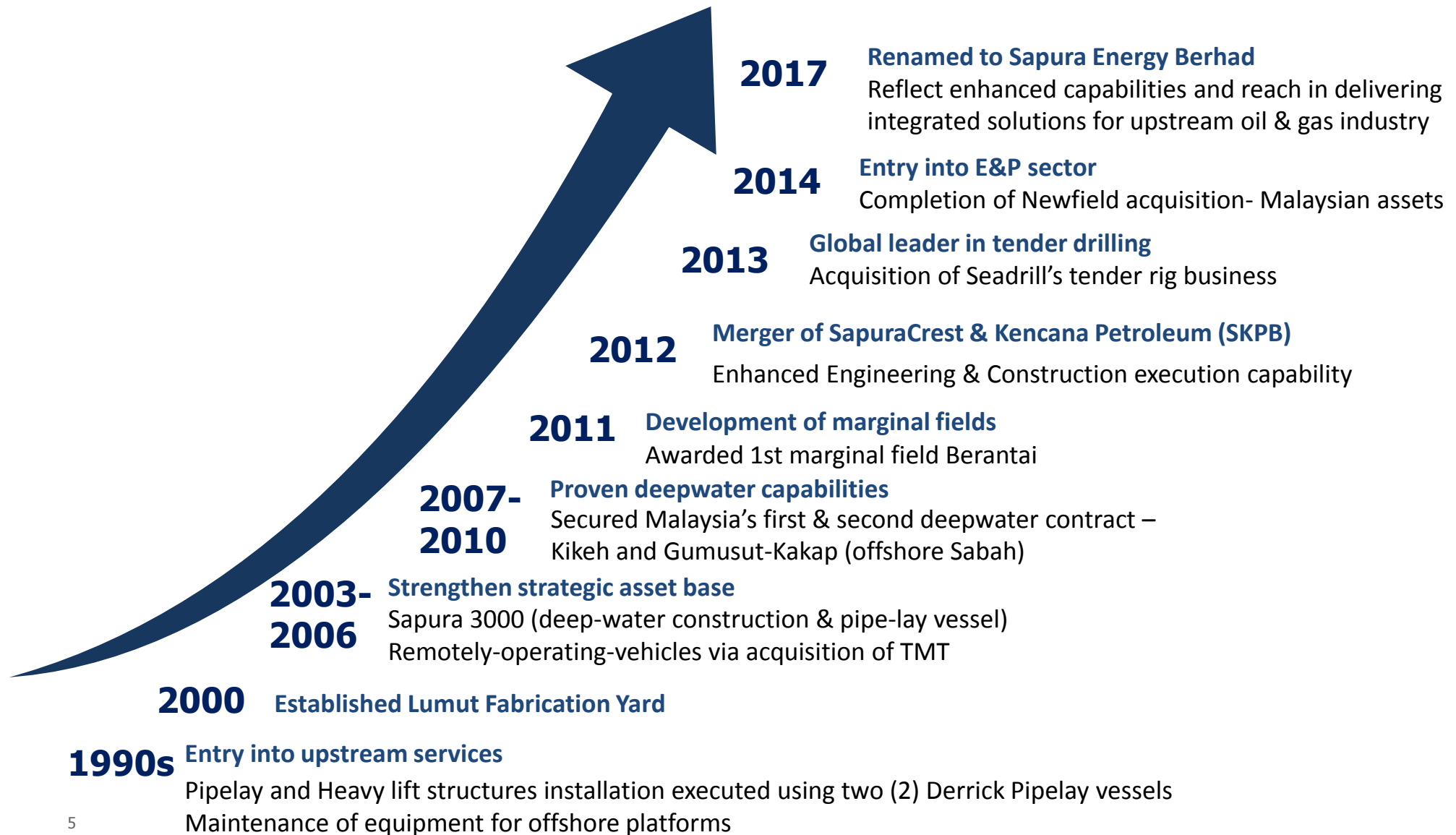
Introduction



- › Sapura Energy was established in the 1990s and is today an **integrated oil and gas services and solutions provider** operating across the entire upstream value chain. As a fully-fledged upstream player, the Group's spectrum of capabilities cover the exploration, development, production, rejuvenation, as well as decommissioning and abandonment stages of the value chain.
- › With a highly skilled and technically capable multinational workforce, strategic world-class assets, and strong project management capabilities, the Group today has a global presence in over 20 countries.



Evolution of Sapura Energy



Organised to deliver services for the upstream industry

Services across the upstream oil and gas value chain



Engineering and Construction

Project Management and Engineering Services

- Centralized Project Management execution with experienced PMT
- In-house multi-disciplined engineering capabilities with offices in Malaysia, London, Perth and Houston

Offshore construction and subsea services

- Installation / decommissioning of structures with maximum single lift capacity of **3500 MT**
- Installation of pipelines in ultra deep water.
- Subsea construction, well-intervention and Brownfield rejuvenation

Combined fabrication yard capacity of 125,000 MT with capabilities for

- Central Processing Platforms
- Wellhead Platforms
- Onshore & Offshore Process Modules
- Subsea structures and manifolds

Drilling

Global market leader in tender rigs

- ~50% market share

Shallow & Deepwater up to 2,000m water depth

- Shallow-water fixed platforms
- Deepwater TLP, spar, compliant towers

Exploration & Production

9 PSC blocks

- 6 operated
- 3 non-operated

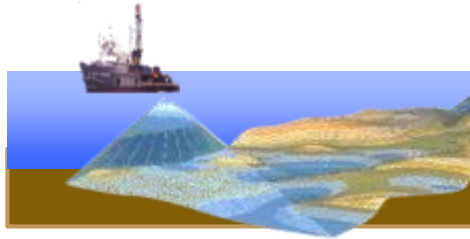
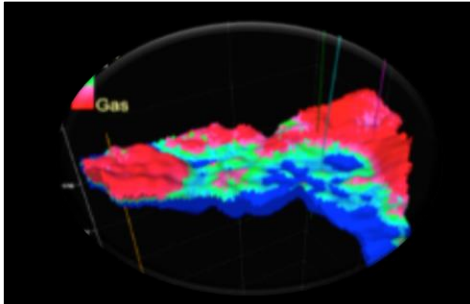
Proven drilling capabilities

- Deep horizontal wells
- Sandstone and carbonate reservoirs
- HPHT

Partnerships with Petronas, Shell & Mitsubishi

Services Across The Life-cycle of Oil and Gas Fields

PSC Exploration



Development (EPC, IPF & HUC)



Exploration

Development

Production

Rejuvenation

Decommissioning
& Abandonment

PSC Exploration

EPC

IPF

Drilling

HUC

PSC + Marginal fields

EOR + Brownfield

Decommissioning

Drilling
















Production & Rejuvenation



Decommissioning



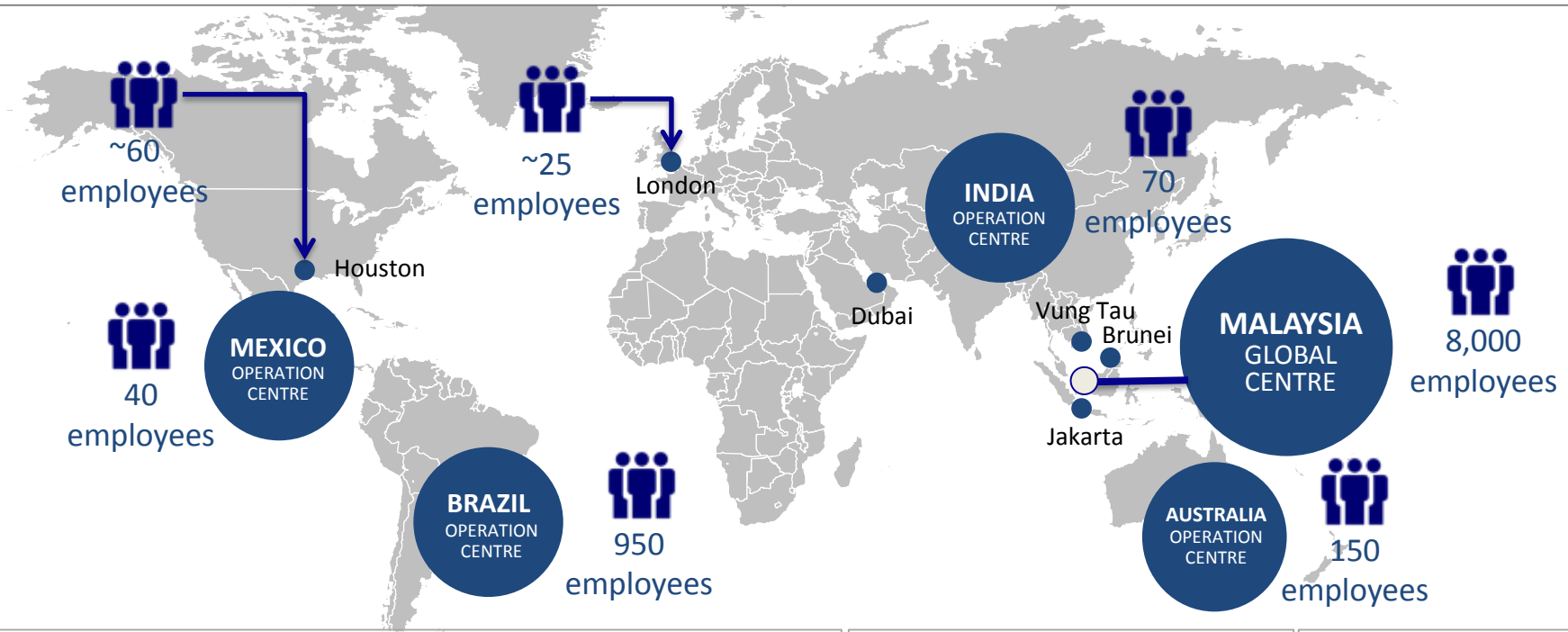
Ownership of Strategic Asset to Ensure Timely Project Delivery

<p>Fabrication Yard</p>	 <p><u>Lumut Yard</u> 273 acres, situated in West Coast of Malaysia facing the Indian Ocean</p>	 <p><u>Labuan Shipyard</u> 88 acres with easy access to South China Sea</p>			
<p>Offshore Construction</p>	 <p><u>6 x Heavylift Derrick Lay</u> For deepwater and shallow water installation work</p>  <p><u>6 x Flexible and Umbilical Lay Vessel</u> Capable of working in WD upto 3,000m</p>	 <p><u>1 x Subsea Construction Vessel</u></p>  <p><u>1 x Floatover Launch Barge</u></p>			
<p>Marine Support</p>	 <p><u>6 x Diving Support Vessel</u></p>	 <p><u>2 x Geotechnical Vessel</u></p>	 <p><u>2 x Anchor Handling Tugs</u></p>	 <p><u>6 x Work Boats and barges</u></p>	 <p><u>28 x Remote Operated Vehicle</u></p>
<p>Drilling</p>	 <p><u>8 x Tender Drilling Rigs</u> Self-raise, rig-up onto offshore platform. Able to drill multiple wells from single location</p>	 <p><u>9 x Semi-tender Drilling Rigs*</u> Similar to Tender but able to operate in deeper water depth, harsher environment *2 under construction</p>			

Project Management Solutions Across The Upstream Oil and Gas Value Chain Globally



Our capabilities in upstream value chain



Ongoing and Recently Completed Key Projects Globally



Pemex – 3,200 MT heavylift

Turkey

- EPCIC for Trans Anatolian Natural Gas Pipeline

Myanmar

- EPCIC Zawtika for PTTEP

Thailand

- Tender drilling for Chevron
- EPCIC B-17, B17-01 for PTT-Petronas Carigali JV

Brunei

- EPCIC Upgrade & Decommission Floating Terminal for Shell

Malaysia

- EPCIC ZAK WHP for Hess
- EPC B15 for Sapura E&P
- Decommission D-30, MOPU Sepat for Petronas
- EOR for ExxonMobil
- Semi-tender drilling for TLP Malikai, Shell

Mexico

- Pipelay for KMZ Project for Pemex

India

- EPCIC MHSRD EPCIC B-127, both for ONGC

Brazil

- 6 Pipelay Vessels Petrobras
- 5,930km flexible pipeline installed for Petrobras

Australia

- Well intervention for Shell
- Well intervention and decommissioning for Woodside



Sapura Diamante



MHSRD III - Topside



B15- CPP



Drilling for Shell Malikai

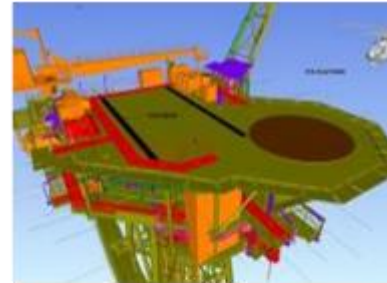
Section 2: Capabilities And Assets



In-house Multi-disciplined Engineering Capabilities



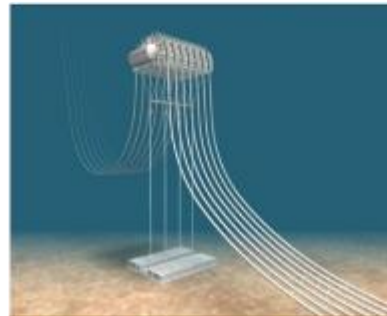
- Peritus International (Australia, USA, UK and Malaysia) (fully owned subsidiary)
 - Advanced subsea, deepwater pipeline and riser engineering.
 - Shallow water/ near shore pipelines.
 - Floating systems engineering.
 - Developments in remote, hostile or deepwater environments
- SapuraKencana Engineering (Malaysia)
 - Conceptual / Front End Design, Detailed Engineering Design, Procurement Support & Commissioning Support.
 - Design pressure vessels, shell & tube exchangers, air-cooled exchangers, skidded & modularized process systems.
 - Design equipment modules for FPSO's, onshore plants & offshore platforms.
 - EPC of new plants & plant upgrades /modifications.
- Ocean Flow International (USA) (fully owned subsidiary)
 - Subsea & Offshore development projects around the world.
 - Deep water and subsea development while possess extensive experience in shallow water development.
- T&I Engineering and Constructability
 - Complete in-house T&I engineering capability for platform facilities, shallow and deepwater pipeline, marine system, SURF and de-commissioning engineering
- Excellent working relationship with International Engineering companies to meet demand and client need



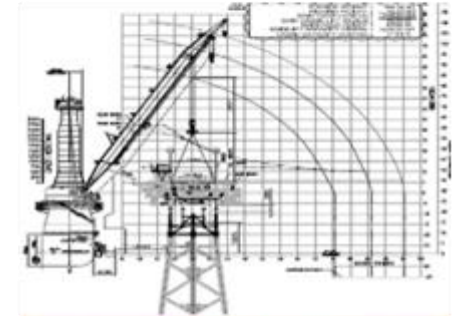
Platform topsides/Modules



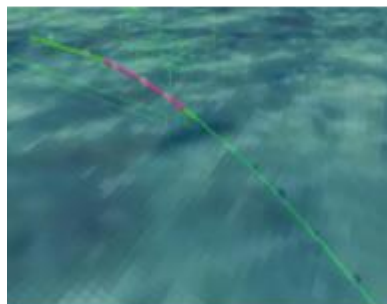
Sub- Structure design



Marine Risers



Installation Engineering

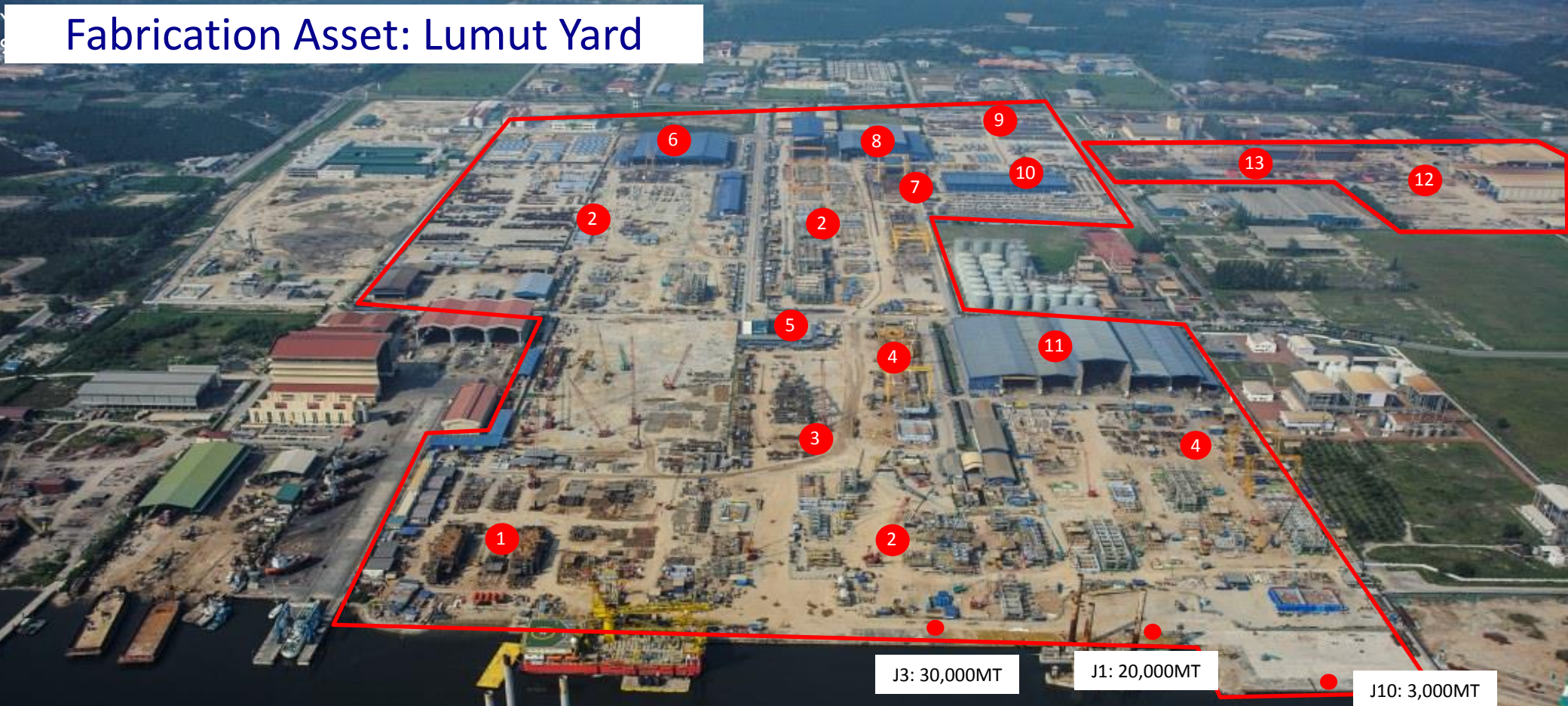


Pipelines Engineering



Project Management

Fabrication Asset: Lumut Yard



- 1. Shipbuilding Yard
- 2. Heavy Structure Erection Area
- 3. Open Area for Assembly Work
- 4. Module Assembly Line c/w 2 units of 25T Gantry Crane
- 5. Administrative Building

- 6. Pipe Workshop Centre
- 7. Heavy Structures Prefab/Auto Production Line c/w 2 units of 75T & 2 units of 25T Gantry Crane
- 8. CNC Pile Profiling Machine & Minor Fabrication Workshop
- 9. Open Storage Area (10,000 tons Material Storage Capacity)

- 10. Warehouse, Canteen & Car Park
- 11. Fabrication Workshops: Module Fabrication, Piping Fabrication, Structural Fabrication
- 12. Fabrication Workshops: Blasting & Painting, Piping Fabrication, Structural, Storage Area
- 13. Open Storage: Auto Blast Workshop, Painting Workshop

J3: 30,000MT

J1: 20,000MT

J10: 3,000MT

TOTAL YARD SPACE	COVERED FABRICATION AREA	OPEN SPACE FABRICATION AREA AND OPEN STORAGE AREA		YEARLY CAPACITY
273 acres	129,302 m ²	967,197m ²		Max up to 90,000 mt
TOTAL OFFICE SPACE	QUAY WATER DEPTH	LOADOUT WHARF LENGTH	WHARF LOADOUT CAPACITY	
22,350 m ²	-6m to -12m	770m	Ranging from 5,000MT to 30,000MT	

Lumut Yard and Marine Base Facilities



Navigation Channel Depth: -12m ACD

Fabrication Yard (2): Labuan Shipyard



**Total Yard
Space**

60 acres

**Covered Fabrication
Area**

30,700 m²

**Open Space
Fabrication Area**

174,800m²

Open Storage Area

14,500 m²

Yearly Capacity

36,000mt

Total Office Space

16,600 m²

Offshore Assets: Deepwater (Rigid Pipeline)



SapuraKencana 1200 DP-3 HLV
1,200MT crane, 520MT tension S-lay



SapuraKencana 3500 DP-3 HLV
3,500MT crane, 390MT tension S-lay



Sapura 3000 DP-2 HLV
2,722MT crane, 240MT tension S-lay,
400MT tension J-lay, 360MT A&R and
A-frame capacity



SapuraKencana Constructor
250MT AHC crane, Sat system

Offshore Assets: Deepwater (Flexible Pipeline and Umbilical)



Sapura Diamante
550MT VLS



Sapura Esmeralda
300MT VLS



Sapura Topazio
550MT VLS



Sapura Jade
550MT VLS



Sapura Onix
550MT VLS



Sapura Ruby
550MT VLS

Offshore Assets: Conventional and Installation Support



LTS 3000 DLB
3,000MT crane, 200MT tension, self propelled



SapuraKencana 2000 DLB
2,000MT crane, 140MT tension



SapuraKencana 900 DLB
9,00MT crane, 120MT tension



FLB-1 Floatover launch barge
16,000MT



6 x ACB



4 x DSV



2 x AHTs



28 x Remotely Operated Vehicles



10 x Air dive system
4 x portable sat system
1x Hyperbaric Rescue Facility (HRF)

HUC & Modification Capabilities



➤ Hook up Works

- WHP, CPP, Compression Module, Riser Platform, Bridge, LQs, Flaring Platform

➤ Brownfield Modification & Topside Major Maintenance Works

- Launcher & Receiver
- Riser Tie-in
- Installation of New Equipment
- Piping Works, Plant Turnaround, Valve Overhaul, Structural Repair
- Electrical & Instrumentation Works
- Repair and maintenance work on existing facilities

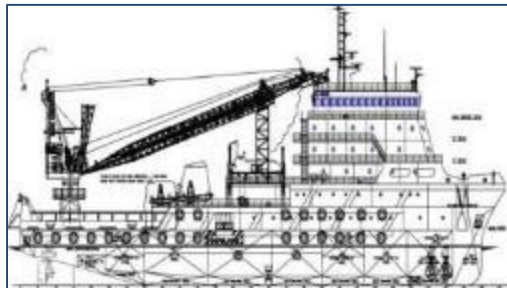
Offshore Assets: HUC & Modification



KPV REDANG
200 Pax
Crane Capacity: 25T
DP2



SARKU SANTUBUNG
123 Pax
Crane Capacity: 33T
DP2



SK DUYONG
DP2
200Pax
Crane Capacity: 50MT



SK AMAN
DP2
200Pax
Crane Capacity: 50MT



SARKU 300
300 Pax
Crane Capacity: 300T



SARKU 2000
270 Pax
Crane Capacity: 96T

Subsea Services Capabilities



Inspection, Repair & Maintenance

- Major inspection, repair and maintenance of platforms, pipelines, FPSO, FSO etc.
- Installation, repair and inspection of subsea facilities and infrastructures
- Pipeline repair and stabilization
- Risk-based integrity management (RBI)

Other Services (non-exhaustive)

- Air & Saturation Diving
- Provision of Diving Support Vessel
- ROV pipeline survey / debris survey
- Underwater NDT survey
- Subsea Wellhead intervention
- Pipeline intervention / sectional replacements
- Underwater inspection in lieu of dry docking (UWILD)
- Anode retrofits
- Underwater inspection & report writing



Subsea Services Assets

- Three (3) active Dynamic Positioning (DP) II Diving vessels
- Six (6) Saturation Diving Systems (Three Classed Systems)
- Eight (8) Air Diving Systems (Two Classed Systems)
- Twenty Two (22) Remotely Operated Vehicles (ROV) and
- Four (4) Drilling Support ROV



SapuraKencana Achiever



SapuraKencana Conquest



SapuraKencana Jane



Work Class ROV



Inspection Class ROV



Drill Support ROV



Observation Class ROV



SM1 DX300, 12-manned sat system (Classed)



SM2 DX300, 12-manned sat system (Classed)



Sat-001, 6-manned sat system



Sat-02, 9-manned sat system



Sat-03, 9-manned sat system (Classed)

LWI and P&A Capabilities

Light Well Intervention / Plug & Abandonment

- Well Intervention
- Well Suspension and Pre-abandonment Tasks / Full Well Abandonment
- Well head severance and recovery (below mud line)

LWI / P&A Assets



Subsea Intervention Device SID



AXE WH Severance System



Intervention Compensation System (ICS)



DSIS Down Hole Survey & Inspection Tool

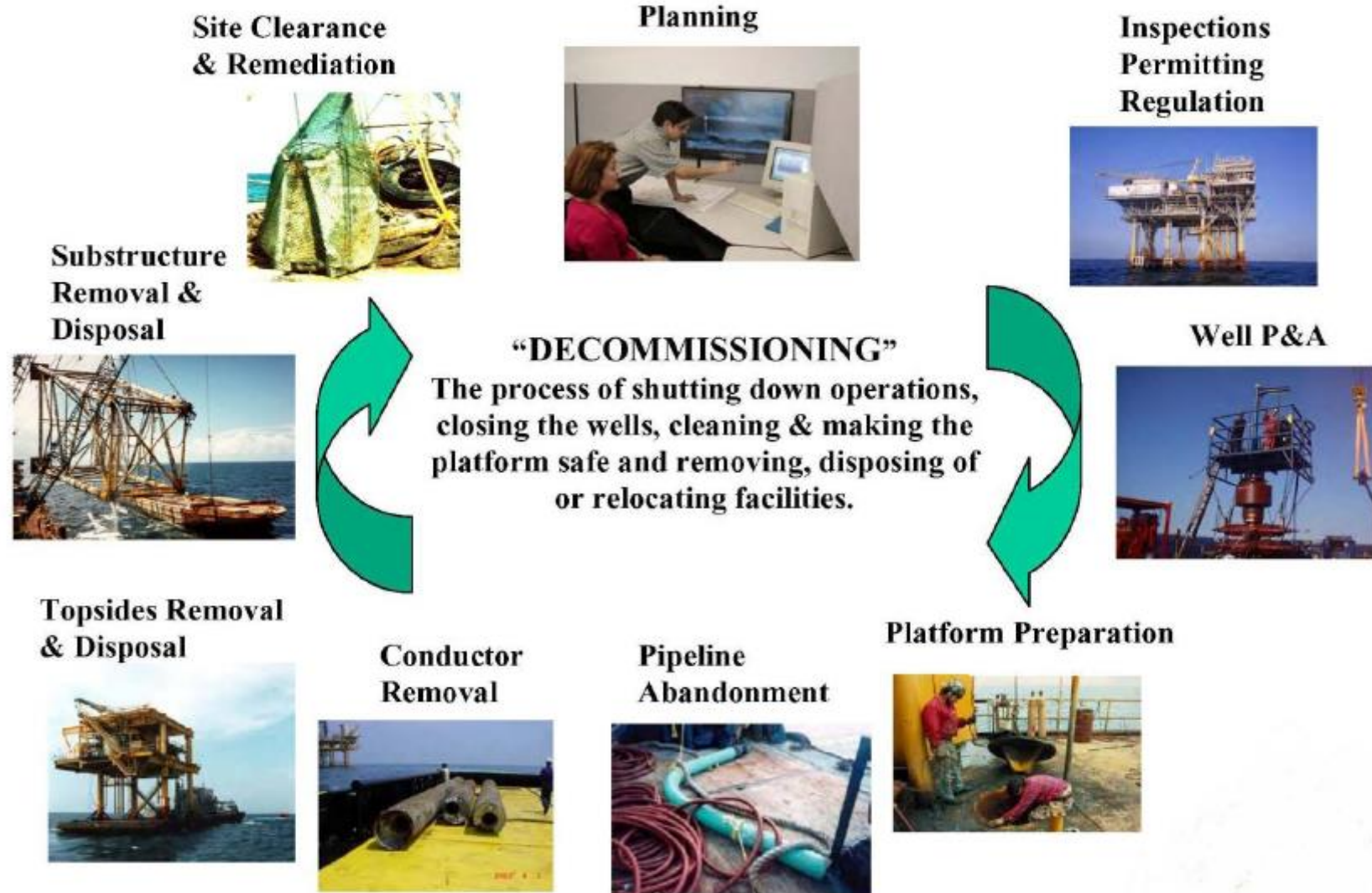


WHAF WH Alignment Frame



Hot Stab Manifold

De-commissioning Capabilities





Deepwater drilling capabilities

- **Semi-submersible tender rigs capable of drilling in up to 2,000 m of water**
- **Demonstrated capability in development drilling off deepwater platforms**
 - Tension-leg platforms
 - Compliant towers
 - Spars
- **World-wide experience with deepwater development drilling**
 - West Seno TLP, Indonesia (1,100 m)
 - Kikeh Spar, Malaysia (1,300 m)
 - Tombua-Landana Compliant Tower, Angola (300 m)
 - Hess Okume/Ebano TLP and Oveng TLP, Equatorial Guinea (500 m)

Drilling Assets : Tender Assisted Drilling (TAD)



SKD T-9



SKD T-10



SKD T-11



SKD T-12



SKD T-17



SKD T-18



SKD T-19



SKD T-20

Drilling Assets : Semi TAD



SKD Pelaut



SKD Menang



SKD Alliance



SKD Berani



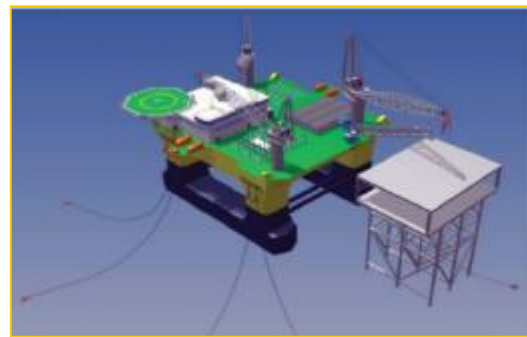
SKD Setia



SKD Jaya



SKD Esperanza



SKD Kinabalu (Under Construction)



SKD Raiqa (Under Construction)

Section 3: Track Record



Track Record: Summary of E&C Track Record



Total Platform Fabricated : 46 no. of Topsides / 54 no. of Jackets

Largest structure fabricated : 14,143 MT Keabangan Jacket for KPOC (2012)

Total Subsea Structures Fabricated : ~69 no. of structures (PLEM, PLET, manifold)

Fabrication of other structures: ~20 (MOPU, compressor modules, bridges, piles, etc.)



Total Platform Installed : ~400 no. of structures (topside, jacket, module, etc.)

Heaviest structure lift : 3,120 MT Kuil-B Topside for PEMEX Mexico (2015)

Largest Floatover Installation : 15,000 MT DPP Topside for Conoco Phillips, Indonesia (2004)

Heaviest Jacket installation : 13,485 MT MHN Jacket for ONGC, India (2011)



Total Rigid Pipeline Installed : ~5,800 km of rigid pipelines

Total Flexible Pipeline Installed : ~6,000km of flexible pipe

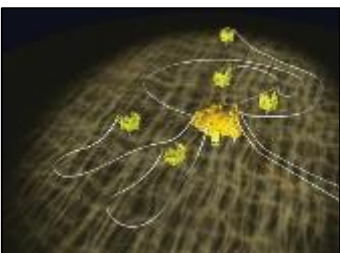
Largest Diameter Lay – Carbon Steel : 46" dia for Pertamina, Indonesia (1994)

Largest Diameter Lay – CRA : 24" dia for Carigali Hess, Malaysia-Thailand JDA (2012)

Longest Pipelay : 200km pipeline for Sabah Shell Petroleum Company, Malaysia (2015)

Deepest installation work – Rigid pipelay : 1,450m WD for Murphy Oil, Malaysia (2008)

Deepest installation work – SURF : 2,500m WD for Petrobras, Brazil (2015)



Track Record: Major EPCIC Experience



Project Name	Scope	Client	Year
CELSE GNL Terminal Project, Brazil	EPCIC of 18" x 8km pipeline, and T&I of mooring yoke tower	CELSE	2017 – 2018 (Ongoing)
B127 Pipeline RTR Project, India	EPCIC of 11 segments pipeline (114km), topside modification, mooring buoys, PLEM and SPM	ONGC	2016 – 2018 (Ongoing)
Zawtika Phase 1C, Myanmar	EPCIC of 4 pipelines (53km), T&I of 4 WHPs	PTTEP	2016 – 2018 (Ongoing)
TANAP Natural Gas Pipeline, Turkey	EPCIC of 2 pipelines (35km)	TANAP	2016 – 2018 (Ongoing)
MHSRD Phase III Project, India	EPCIC of 3 WHPs, 15 pipelines (116km) and modification on existing 18 platforms	ONGC	2015 – 2017
CPOC Phase 3 Development Project, JDA	EPCIC of 4 WHPs and 4 pipelines (44km with 5.5km CRA)	CPOC	2014 – 2017
EPCIC of WHP for NMB, Malaysia	EPCIC of 3 remote WHPs	Hess	2014 – 2016
EVA Trunkline Project, Malaysia	EPCIC of riser platform and pipeline (75km)	TTM	2013 – 2016
Pearl Manora Development Project, JDA	EPCIC of 1 WPP and 2 pipelines (2km)	Mubadala	2012 – 2014
Berantai Project, Malaysia	EPCIC of WHP, 30km pipeline and 4km flexible flowlines	Petrofac	2011 – 2012
Gumusut-Kakap Project, Malaysia	EPCIC of 200km PL & subsea structures WD 1,200m	SSPC	2010 – 2014
EPCIC for JDA B-17 Project, JDA	EPCIC of pipelines (48km) and T&I of 6 WHPs	CPOC	2007 – 2009
Kikeh Development Project, Malaysia	EPCIC of 88.5km PL & subsea structures WD 1,450m	Murphy	2006 – 2008
EPCIC of MOPU Seabase Phase 1, Malaysia	EPCIC of MOPU	PCSB	2014 – 2015
B15 Jacket and CPP Topside, Malaysia	EPCIC of B15 CPP topside and jacket	SKE	2016 – 2017
BNJT-K & TTJT-A WHP, Malaysia	EPCIC of 2 WHPs	PCSB	2014 – 2017
Layang Development Project, Malaysia	EPCIC of 1 WHP	JX Nippon	2014 – 2015
EPCIC for Bumi, Bulan & Suriya, JDA	EPCIC of 3 WHPs	CTOC	2006 – 2007
EPCIC of Serendah and Patricia, Malaysia	EPCIC of Serendah topside and Patricia topside	MOC	2012 – 2013

Track Record: Major Pipelay Experience



Project and Location	Client	Year	Scope
CELSE GNL Terminal Project, Brazil	CELSE	2017 – 2018	EPCIC of 18" x 8km pipelines (onshore and offshore)
Trans Anatolian Natural Gas Pipeline, Turkey	Tanap Dogalgaz Iletim	2016 – 2018	EPCIC of 2 x 36" x 17.6km pipelines
Guntong Pipeline Project, Malaysia	ExxonMobil	2016	T&I of 12" x 11.58km pipelines
MHS Rd Phase III, India	ONGC	2015 – 2017	EPCIC of 15 pipelines (total length: 116km)
KJG Onshore & Offshore Pipeline, Indonesia	PT PGas Solution	2014 – 2015	T&I of 14" x 198km pipelines (onshore and offshore)
Pan Malaysia 2014 (ExxonMobil), Malaysia	ExxonMobil	2014	T&I (6" – 18") pipelines (total length: 42km)
Nam Con Son 2 Gas Pipeline, Vietnam	PV Gas	2014 – 2015	T&I of 26" x 151km pipelines
CPOC Phase 3 Development, JDA	CPOC	2014 – 2016	EPCIC of 4 x 18" pipelines (44km; 5.5km CRA)
MB Platform and Pipeline Project, India	BG India	2014 – 2015	T&I of 2 x 14" pipeline + 5" piggyback (30km)
EVA Trunkline Project, JDA	TTM	2013 – 2015	EPCIC of 24" x 75km pipelines
Pan Malaysia 2013 (ExxonMobil), Malaysia	ExxonMobil	2013	T&I (6" – 18") pipelines (total length: 37km)
Pan Malaysia 2012 (ExxonMobil), Malaysia	ExxonMobil	2012	T&I (10" – 28") pipelines (total length: 90km)
Bumi-B and Cakerawala-D Project, JDA	CHOC	2011 – 2012	24" x 6.4 and 10" x 3.9km CRA pipelines
T&I for Puteri Pipeline Restoration, Malaysia	Newfield	2011	T&I of 12" & 8" pipe-in-pipe with 4" piggyback pipelines
Pan Malaysia 2010 (ExxonMobil), Malaysia	ExxonMobil	2010	T&I of 12" x 4km CRA pipelines
Gumusut Kakap Development, Malaysia	Shell	2010 – 2014	EPCIC of deepwater pipelines (WD 1,200m)
Kikeh Gas Pipeline Project, Malaysia	Murphy	2006 – 2008	EPCIC of 12" x 88km deepwater pipelines (WD 1,450m)

Total Length of Rigid Pipeline Laid : ~5,800km

Track Record Snapshot: EPCIC Mumbai High South Phase III



Client: ONGC
Field: Mumbai High South
Scope: EPCIC of 3nos Wellhead Platforms, 18 nos. platforms modification and 177km of pipelay and Subsea repair works

Period: May 2015 – April 2017

Tonnage: 17,386 MT

Manhours: 6,951,732



Track Record Snapshot: EPCIC CPOC Phase 3 Development

Client: Carigali-PTTEP Operating Company
Field: MTJDA
Scope: EPCIC of 4 WHPs, 4 x 18" pipeline (total length 44km with 5.5km CRA) and Brownfield modifications
Period : June 2014 – Feb 2018
Tonnage: 5,576MT



Track Record Snapshot: EPCIC HESS CDK Development

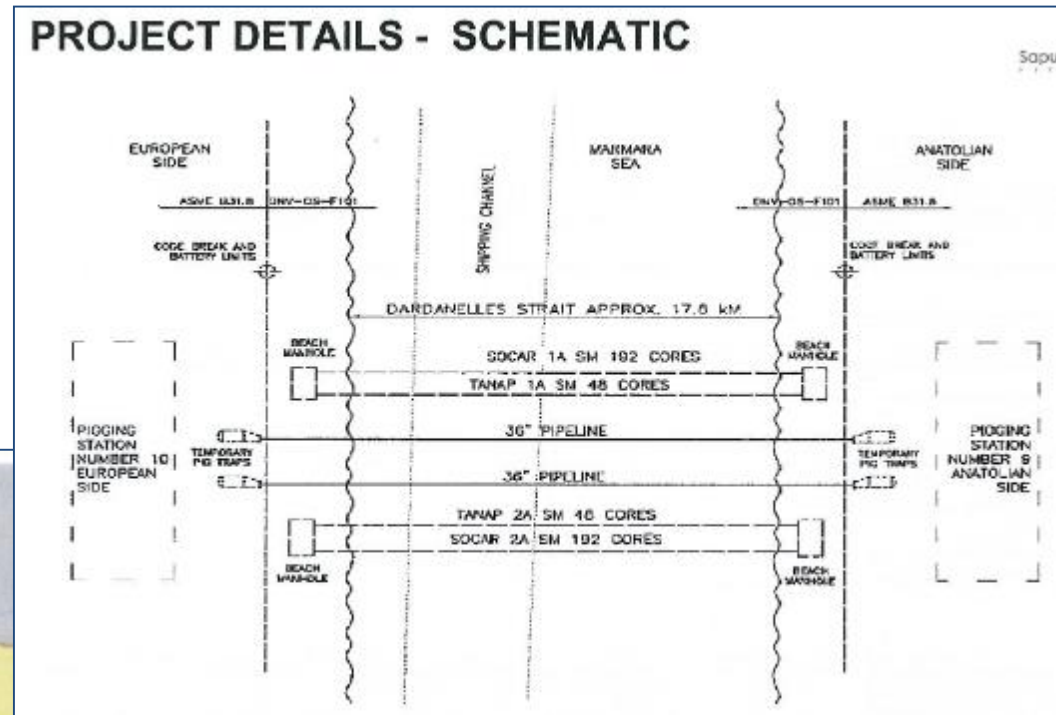


Client: HESS
Field : North Malay Basin
Scope: FEED + EPCIC (FEPCIC) of 3 nos Remote Wellhead Platforms (RWHP)
Period: May 2014 – Sept 2016
Tonnage: 7,039 MT



Track Record Snapshot: EPCIC TANAP Natural Gas Pipeline

- Client:** Tanap Doğalgaz İletim A.Ş
- Field:** Dardanelles Strait, Turkey
- Scope:** EPCIC of 2 x 36" x 17.6km pipelines
EPCIC of 4 x Fibre optic cable
Include shore approach installation
- Period :** July 2016 – Ongoing (expected completion in July 2018)



Track Record Snapshot: EPCIC ONGC B127 Pipeline Project

Client: Oil and Natural Gas Corporation
Field: Bassein & Mumbai High South Field
Scope: EPCIC of 11 segments pipelines (total length 114km)
Topside modification and riser installation
Period : Sept 2016 – March 2018



Track Record Snapshot: EPCIC Tukau and Baronia Development



Client: Petronas Carigali Sdn Bhd
Field: Tukau & Baronia Field
Scope: EPCIC of 2 nos Wellhead Platforms
Period: April 2014 – July 2015
Tonnage: 10,075 MT



Track Record Snapshot: EPCIC Layang Development Project



Client: JX Nippon

Field: Layang Field

Scope: EPCIC of 1 nos Wellhead Platform

Period: April 2014 – July 2015

Tonnage: 3,644 MT



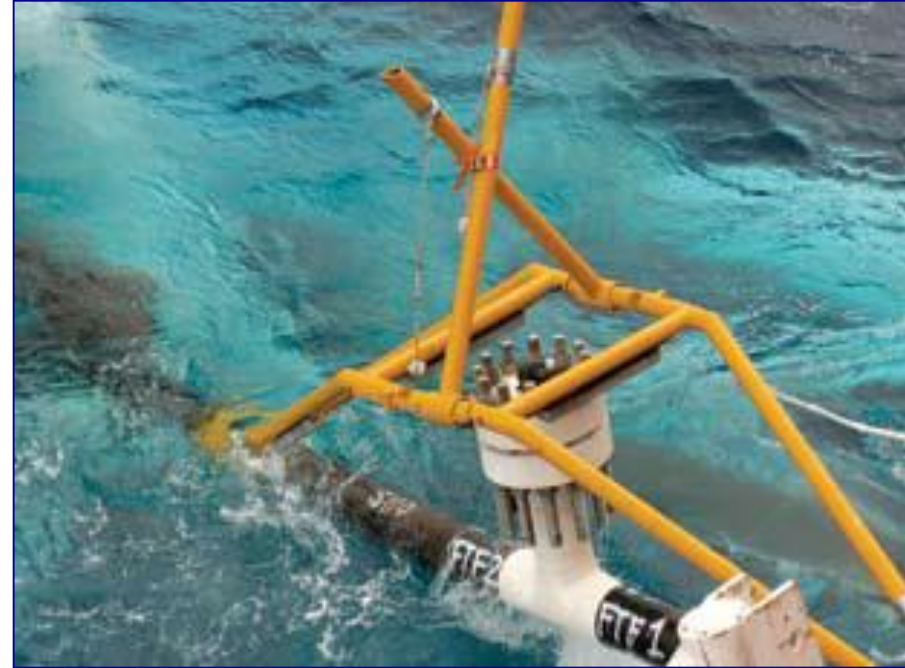
Track Record Snapshot: EPCIC Kikeh Deepwater Project

Client: Murphy Oil Corporation
Field: Kikeh Field
Scope: 12" export x 138km pipeline, PLEM, tie-in jumper spool and in-line future tap tie-in installation

Period : 2006 – 2007

Water depth : 1,450m

1st Deepwater project in Malaysia



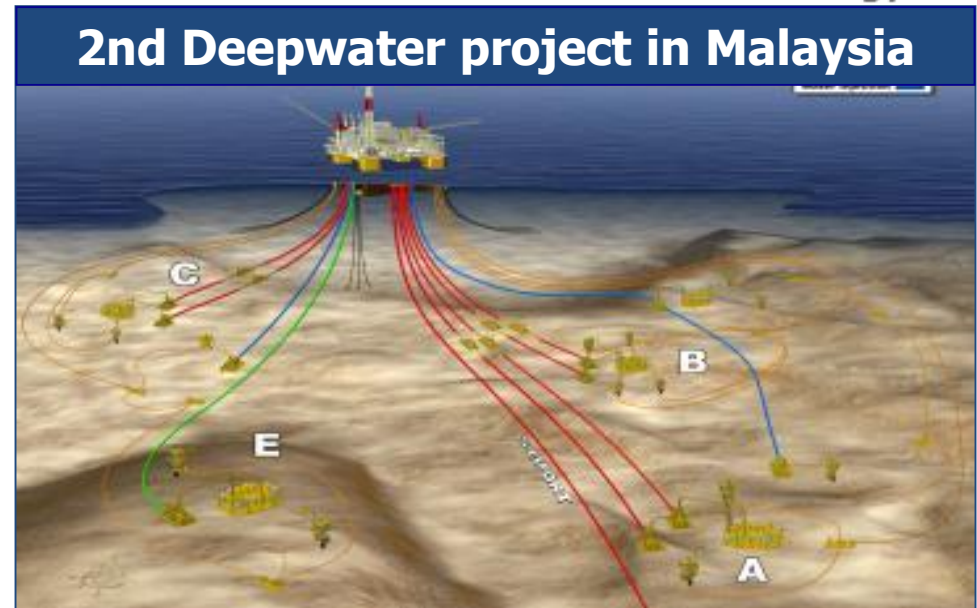
The Kikeh field was discovered in Aug 2003 and was the first offshore deepwater development in Malaysia. The field is located in 1,450 meters water depth offshore Sabah, making the Kikeh gas pipeline the deepest rigid pipeline installed in Asia Pacific region to date. The project was successfully completed in 2008 with minimum installation downtime



Track Record Snapshot: EPCIC Gumusut-Kakap Project

Client: Sabah Shell Petroleum Company
Field: Gumusut Kakap Deepwater Offshore
(Block J & K)
Scope: 18" x 200km export pipeline including shore approach, 8" & 12" flowlines with SCRs, 5 no. Subsea Manifolds, 9 no. PLETS & 7 nos. sleds

Period : 2008 – 2009
Water depth : 1,200m



Track Record Snapshot: EPC of Kebabangan Jacket

Client: Kebabangan Petroleum Oil Company (KPOC)

Field: Kebabangan Northern Hub Development Project

Scope: EPC for 8-legged floatover jacket

Period: April 2011 – Sept. 2012

Tonnage: 14,143 MT



Track Record Snapshot: EPC Chevron Wheatstone LNG Module



Client: Bechtel (West Australia) Pty Ltd

Scope: Fabrication of LNG ISBL Module for Chevron Wheatstone Project

Period : 2012 – 2015

Tonnage : 65,909+ MT.



Track Record Snapshot: Chevron Gorgon LNG Project Pre-assembled Pipe Rack (PAR)

Client: Saipem SA

Scope : Fabrication of Pre- Assembled Pipe Rack (PAR)

Period: April 2011- Nov 2013

Tonnage: 15,406 MT



Track Record Snapshot: PEMEX Platform Installation & Pipelay



Client: PEMEX

Field: Bay of Campeche, Mexico

Scope: Installation of fixed marine platforms, pipelaying and lifting of major power generation equipment, utilizing DP3 vessel SapuraKencana 3500

Period: April – Oct 2015

Cumulative Track Record by SK3500 in region:

- Total tonnage Installed till date: 10,987 MT
- Total pipelay: 40 km (up to 36")

Heaviest Lift with SK3500 for Kuil B
Topsides 3,200MT



Track Record Snapshot: ONGC MHN Project



Client: ONGC
Field: Mumbai High North ,
India
Scope: Transport and
Installation of Platforms
(MNP, MLQ, MNF 1 &
MNF 2)
Period: Dec 2010 – May 2011

Heaviest Jacket Launched and
Installed (13,380MT)

Track Record Snapshot: VSP Nam Con Son 2 Project



Client: Vietsovpetro (VSP)

Field : Nam Con Son Basin, Offshore Vietnam

Scope: 26" x 151km Offshore Pipeline
Construction for Nam Con Son 2 Gas
Pipeline

Period: Jul 2014 till Nov 2015

Track Record Snapshot: Thai Binh – Ham Rong Project



Client: PTSC Offshore Services

Field : Thai Binh Field, Offshore Vietnam

Scope: T&I of 12" x 5.28 km - nearshore scope, 12" x 13.1km – offshore and beachpull (3.1km), tripod jacket at 541MT, 3 x 54" OD pile, 2 x 26" OD conductor, Boat landing 73.75MT, Riser guard 33.77MT and a Topsiside 787MT.

Period: Nov 2014 – Oct 2015



Track Record Snapshot: BG India MB Project



Client: BG India

Field: Panna-Mukta Field, India

Scope:

Transportation & Installation of:

- One WHP (≈1500MT)
- Pipeline 14" + 5" piggyback x 25km
- Pipeline 14" + 5" piggyback x 5km

Period : 2014 – 2015

Track Record Snapshot: Deepwater Pipelay for Petrobras (1)

Sapura Diamante



Sapura Esmeralda



Sapura Topazio



Sapura Jade



Sapura Onix



Sapura Rubi



Field : Brazil Pre-salt Basin

Scope : Deepwater Flexible Pipelay

Pipeline Laid: ~5,930km of 4" – 9" flexible pipeline

Water depth: up to 2500mtr

99.5% uptime

Track Record Snapshot: Deepwater Pipelay For Petrobras (2)



- Installation of
 - 1,226km of flexible pipeline at Lula Field, Brazil (Max WD 2,252m)
 - 57km of flexible pipeline at Entorno de Iara Field (Max WD 2,250m)
 - 100km of flexible pipeline and 600m flexible jumper at Iracema Sul Field (Max WD 2,228m)
 - 290km of flexible pipeline at Sapinhoa field (Max WD 2,130m)



- Installation of
 - 482km of flexible pipeline at Lapa Field (Max WD 2,149m)
 - 621km of flexible pipeline at Lula Field (Max WD 2,130m)
 - 21km of flexible pipeline at Sapinhoa Field (Max WD 2,154m)
 - 8km of flexible pipeline at Marlim Sul field (Max WD 1,188m)



- Installation of
 - 265km of flexible pipeline at Lula Field (Max WD 2,252m)
 - 129km of flexible pipeline at Cernambi Field (Max WD 2,246m)
 - 5.6km of flexible pipeline at Iracema Norte Field (Max WD 2,240m)
 - 365km of flexible pipeline at Sapinhoa field (Max WD 2,221m)

Track Record Snapshot: Deepwater Pipelay For Petrobras (3)



- Installation of
 - 343km of flexible pipeline at Lula Field, Brazil (Max WD 2,248m)
 - 73km of flexible pipeline at Iracema Norte Field (Max WD 2,240m)
 - 119km of flexible pipeline and 600m flexible jumper at Iracema Sul Field (Max WD 1,323m)



- Installation of
 - 1.8km of flexible pipeline at Espadarte Sul Field (Max WD 2,500m)
 - 594km of flexible pipeline at Lula Field (Max WD 2,260m)
 - 24km of flexible pipeline at Sapinhua Field (Max WD 2,179m)
 - 1.4km of flexible pipeline at Jubarte field (Max WD 1,371m)



- Installation of
 - 93km of flexible pipeline at Lula Field (Max WD 2,248m)
 - 427km of flexible pipeline at Sapinhua Field (Max WD 2,165m)
 - 10km of flexible pipeline at Sepia Field (Max WD 2,135m)
 - 10km of flexible pipeline at Itapu field (Max WD 2,009m)

Track Record Snapshot: Bayu Undan Project (Floatover)

TIMOR SEA, EAST TIMOR



Track Record Snapshot: Woodside Angel Topside Floatover



Track Record Snapshot: EPC of Subsea Systems (1)



Title

Woodside GWF Project

Client / Owner

FMC Technologies (Singapore) Pte Ltd / Woodside Limited (Australia)

Work Scope

Engineering, Procurement and Construction of 2 manifolds and 2 skids

Period

October 2012 – March 2014

Tonnage

480 MT



Title

Shell Prelude Project

Client / Owner

FMC Technologies (Singapore) Pte Ltd / Sarawak Shell Limited

Work Scope

Engineering, Procurement and Construction of 2 Production Manifolds with mudmats, 1 Riser Base Manifold with mudmat

Period

February 2013 – October 2015

Tonnage

833 MT

Track Record Snapshot: EPC of Subsea Systems (2)



Title
Ichthys Project

Client / Owner
GE Vetco Gray Scandinavia AS

Work Scope
Fabrication of 5 units Manifold with Foundations and 1 unit SDH with Foundation for Ichthys project

Construction Period
July 2013 – Dec 2015

Tonnage
2,058 MT

Title
Upper Pyrenees Moondyne Dev Proj

Client / Owner
Cameron Limited

Work Scope
Fabrication and Supply of 4-Slot Production Manifold

Construction Period
Dec 2012 – July 2013

Tonnage
118 MT

Title
Julimar Development Project

Client / Owner
GE Oil & Gas , Vetco Gray Scandinavia AS

Work Scope
Engineering & Construction of 1 Production Manifold & Foundation, 1 Cross Over Manifold & Foundation, 3 pig launchers, 14 Jumper kit and 3 PLETs

Construction Period
April 2013 – October 2015

Tonnage
2,160 MT

Track Record Snapshot: EPC of Subsea Systems (3)



Title
BHP Pyrenees Project

Client / Owner
Cameron Limited / BHP Billiton
(AUSTRALIA)

Work Scope
EPC of subsea manifolds and foundation
mud mats.

Period
2007 – 2009

Tonnage
810 MT

Title
Reliance KG-D6

Client / Owner
Aker Kvaerner (M) Sdn Bhd / Reliance
Industries Limited. Ltd. (INDIA)

Work Scope
9 units: 3 manifolds, 6 suction anchors for
manifolds, 1 DWPLEM with suction anchor,
1 UDH with suction anchor, 3 SDA with
suction anchors.

Period
2006 – 2007

Tonnage
2,337 MT

Title
Gumusut-Kakap Project

Client / Owner
FMC Wellhead Equipment Sdn Bhd
(MALAYSIA)

Work Scope
5 Subsea Manifolds Gumusut-Kakap

Period
2008 – 2009

Tonnage
600 MT

Track Record Snapshot: EPC of FDSO / FDPSO Modules



M20, Bumi Armada

Client / Owner

Bumi Armada

Work Scope

Engineering, Procurement & Construction

Period

2008 – 2009



Prosafe Azurite Development Module Construction

Client / Owner

Prosafe Production Services Pte Ltd

Work Scope

Detail engineering for Electrical Module and work drawings for all other Module, Procurement, Fabrication, Assemble, Erection T&C

Period

2007 – 2008

Major Track Record: Brownfield



	Project Title	Client	Man Hours	Duration
1	Tapis Enhanced Oil Recovery (EOR) – Rejuvenation & Retrofit Project	EMEPMI	2,400,000	Feb 2014 – 2018 (On Going)
2	Provision of Hook-Up, Commissioning and Topside Major Maintenance Services for 2013 to 2018	EMEPMI	3,400,000	May 2013 – 2018 (On Going)
3	Provision of Construction Services For Brownfield Projects. DU3744A2	EMEPMI	2,227,469	July 2009 – Apr 2013
4	Provision Of Hook-up And Commissioning For Platform Upgrading, Modification For MHSRD III Project Phase 2	ONGC	1,650,000 (Phase 1) 1,200,000 (Phase 2)	Oct 2015 – Apr 2017 (On Going)
5	Provision Of Phase 2 Early Gas Brownfield Construction For Cakerawala Gas Field Development	Carigali-HESS	2,953,590	May 2006 – May 2008
6	Provision Of Hook Up & Commissioning for Restoration Of Bekok-C	Petronas Carigali / Petrofac	2,229,882	Jun 2012 – Feb 2014
7	Provision of Hook-Up and Commissioning for Platform Upgrading, Revisit and IO Modification for Samarang Redevelopment Project (Phase 2) including LQ upgrade	Petronas Carigali	1,500,000	Aug 2012 – Dec 2014
8	Brownfield Works on MDPP, MDB and JKB Platforms for JDA Block B-17 and B-17-01 field phase 3 development project.	Carigali- PTTEP	242,545	Jan 2015 – Nov 2015
9	Provision Of Topside Major Maintenance, Hookup ,Commissioning and Construction Services	Sarawak Shell / Sabah Shell	7,2000,000	Sept 2008 – Dec 2013
		Total Mhrs	25,003,186	

Track Record Snapshot: HUC and Brownfield (1)



Title

Tapis EOR Brownfield Modification and Retrofits Project (long term)

Client / Owner

ExxonMobil Exploration & Production Malaysia Inc.

Period

February 2014 – 2018 (Ongoing)

Man-Hours

2.3 million (HSE LTI=0)

Title

Hook-Up, Commissioning and Topside Major Maintenance Services for 2013 to 2018 (long term)

Client / Owner

ExxonMobil Exploration & Production Malaysia Inc.

Period

May 2013 – 2018 (Ongoing)

Man-Hours

4 million (HSE LTI: 0)

Title

Construction Services For Brownfield Projects. DU3744A2 (long term)

Client / Owner

ExxonMobil Exploration & Production Malaysia Inc.

Period

July 2009 – April 2013

Man-Hours

2.2 million (HSE LTI: 0)

Track Record Snapshot: HUC and Brownfield (2)



Title

Hook Up Commissioning for Platform Upgrading, Revisit and IO Modification for Samarang Redevelopment Project (Phase 2) including LQ Upgrade

Client / Owner

PETRONAS Carigali Sdn Bhd

Period:

August 2012 – December 2014

Man-hours

1.5 Million (HSE LTI – 0)

Title

Brownfield Works On MDPP, MDB, and JKB Platforms For Phase 3 Development Project

Client

Carigali-PTTEP Operating Company Sdn Bhd (CPOC)

Period:

January 2015 – November 2015

Man-Hours

250,000 (HSE LTI : 0)

Title

Hook-Up and Commissioning for Restoration of BEKOK-C

Client

Petronas Carigali / Petrofac Engineering and Construction

Period

June 2012 – February 2014

Man-hours

2.2 Million (HSE LTI-0)

Track Record Snapshot: HUC and Brownfield (3)



Title

GREENFIELD - EPCIC of JDA Gas Balancing Evacuation Project (EVA) Project for Trans Thai-Malaysia (Malaysia) Sdn Bhd

Client / Owner

Trans-Thai Malaysia Sdn Bhd

Period:

July 2013 – April 2015

Man-hours: 245,000



Title

GREENFIELD - EPCC of KAMELIA-A Wellhead Platform (WHP) for Early Production Scheme (EPS), North Malay Basin Field

Client

Hess Exploration and Production Malaysia B.

Period

December 2011 – March 2013

Man-Hours: 330,000



Title

GREENFIELD - Provision of Hook-Up and Commissioning Services for Keabangan Northern Hub Development Project

Client / Owner

Keabangan Petroleum Operating Company Sdn Bhd (KPOC)

Period

June 2012 –December 2014

Man-hours: 700,000

Track Record Snapshot: HUC and Brownfield (4)

**Title**

GREENFIELD – EPC of Serendah (SN-PA) & Serendah Accommodation (SN-AA) Substructure for Murphy's Sarawak SK309/311 SPSA Sarawak Development Project

Client

Murphy Sarawak Oil

Period

June 2012 – October 2014

Man-hours: 300,000

**Title**

GREENFIELD - EPCIC of Patricia Satellite, PT-SA & West Patricia, WP-PA Topsides Facilities for SK309/311 Murphy's Sarawak Development Project

Client

Murphy Sarawak Oil

Period

February 2013 - August 2013

Man-Hours: 90,000

**Title**

GREENFIELD - PCSB HUC for Kanowit CPP KAKG-A Platform (Kumang Cluster Development Project- Phase 1)

Client / Owner

Petronas Carigali Sdn Bhd

Period

2010 – 2011

Man-hours: 700,000

Track Record Snapshot: HUC and Brownfield (5)



GREENFIELD - Offshore HUC Works for Kinabalu NAG Processing Platform B (KNPG-B)

Client / Owner

Malaysian Marine Heavy Engineering Sdn Bhd/ PCSB

- 1st Gas introduction achieved on 31 Dec 2012
- Platform Living Quarters habitation completed within 11 days on 7th August 2012.

Period

Aug 2012 – Mar 2013

Man-Hours: 1.5 Million



GREENFIELD - Supply, Delivery, Installation & Commissioning Of Refurbished Wellhead Platform, Pipeline & Host Tie-In For D21 Project

Client / Owner

IEV Group Sdn Bhd/Petronas Carigali Sdn Bhd

- 1st oil introduction achieved on 31 December 2012
- Installation of A2 Flow Line Well completed

Period

Feb 2012 – July 2013

Man-Hours: 86,600

Decommissioning Track Record: Dana & D30

Project Details	
Project Name	EPRD of Dana & D30 Decommissioning
Location	Offshore Sarawak, Malaysia
Client	PCPP Operating Company Sdn. Bhd.
Contractor	Sapura Offshore Sdn Bhd
Year	2017
Water Depth	80 meters
Vessel Utilised	SK 3500
Scope of Work	Engineering, preparation, removal and decommissioning of: <ul style="list-style-type: none">• Dana and D30 light weight structure• Pipeline end capping and burial
Detail of structure	Dana LWS: <ul style="list-style-type: none">• Jacket: 461MT• Topside: 77MT D30 LWS: <ul style="list-style-type: none">• Jacket: 410MT• Topside: 535MT



Decommissioning Track Record: Woodside Balnaves

Project Details	
Project Name	Balnaves Phase 2 and 3A
Location	NWS Western Australia
Client	Woodside Energy Limited
Contractor	Sapura Energy Australia
Year	2016
Water Depth	500m
Vessel Utilised	SK Constructor
Scope of Work	<ul style="list-style-type: none">(i) Disconnection of risers and flowline from FPSO Armada Claire DTM(ii) Recovery of buoyancy modules, mooring chains, riser, flowlines, manifold, jumpers, spools and riser tether base(iii) Towing of DTM to 500m zone



Decommissioning Track Record: Shell LWI and WH Severance

Project Details	
Project Name	Provision of LWI Services for Shell
Location	Australia
Client	Shell Australia
Contractor	Sapura Energy Australia
Year	2016 – 2017
Water Depth	170m
Vessel Utilised	SK Constructor
Scope of Work	<ul style="list-style-type: none">(i) Light well intervention services for Prelude Commissioning(ii) Subsea Wellhead severance and retrieval in Crux & Block F



Decommissioning Track Record: Buffalo Project

Project Details	
Project Name	Buffalo De-Commissioning Project
Location	Buffalo Field, Australia
Client	Modec Inc
Contractor	Sapura Energy Australia
Year	Between 2004 – 2005
Water Depth	Between 30 – 300 meters
Vessel Utilised	SK 900
Scope of Work	<ul style="list-style-type: none"> (i) Plugging and abandonment of all production wells and flowlines (ii) Disconnection of the flexible flowlines and umbilical from the FPSO (Buffalo Venture) (iii) Recovery of the flexible flowlines, rigid flowlines and umbilical in water depths up to 300m (iv) Removal of the wellhead platform including topside, jacket and well conductors
Detail of de-commissioned structure	<ul style="list-style-type: none"> (i) Rigid flowlines (10"x2.8km & 4"x2.8km) (ii) Flexible flowlines (~600m) (iii) Umbilical (~2.8km) (iv) Topside (Weight = 330MT)



Decommissioning Track Record: Baram-8 Structure Removal

Project Details	
Project Name	Baram-8 Structure Removal
Location	Offshore Sarawak, Malaysia
Client	Sarawak Shell Berhad (SSB)
Contractor	Sapura Offshore Sdn Bhd
Year	Between 2004 – 2005
Water Depth	Approx. 56 meters
Vessel Utilised	DLB 332
Scope of Work	(i) To remove the abandoned Ba-8 Tripod structure (ii) Relocate the de-commissioned jacket to Siwa Coral area as an artificial reef
Detail of structure	Tripod Jacket (Weight = 500MT)

- Baram-8 was damaged in a storm and collapsed to the seabed in 1975
- Baram-8 decommissioning project was a salvage operation
- The recovered jacket was made into the first artificial reef in Malaysia



Decommissioning Track Record: Demobilization of FSO Abu

Project Details	
Project Name	Provision for Demobilization of FSO Abu
Location	South Angsi Field, Offshore Terengganu
Client	MISC Offshore Floating Terminals Ltd.
Contractor	Sapura Offshore Sdn Bhd
Year	2016
Water Depth	Approx. 70 meters
Vessel Utilised	SK 1200, SK Achiever
Scope of Work	(i) Disconnection of FSO incl. 2 flexible risers, floating hose and 6 mooring legs (ii) Towing of FSO to yard in Johor Bahru



Decommissioning Track Record: Iwaki Platform Project

Project Details	
Project Name	Iwaki Platform Decommissioning Project
Location	Iwaki Gas Field, Japan
Client	Offshore Iwaki Petroleum Co. Ltd.
Contractor	SapuraAcergy (50% owned by SEB)
Year	2009 - 2010
Water Depth	154 meters
Vessel Utilised	Sapura 3000
Scope of Work	<ul style="list-style-type: none"> (i) Removal of topside facilities and module support frame (ii) Cutting jacket members at EL-92 meters (iii) Lifting of upper section of jacket, lowering onto seabed and toppling (iv) Cutting and stabilising export pipeline
Detail of structures	<ul style="list-style-type: none"> (i) 8-legged platform weighing 20,735MT (ii) 12" gas export pipeline



- Topside removal is made in 16 modular topside lifts ranging from 10MT to 1100MT
- Jacket de-commissioning is made with 188 subsea cuts, at depth of 92m
- Upper section of jacket (1500MT) was lifted and lowered to the seabed
- Iwaki platform was the biggest platform in the Asia Pacific region to be decommissioned

De-commissioning Track Record: Well P&A (1)



INSTALLATION	COUNTRY	OPERATOR	FIELD	WELL
T7	Thailand	Chevron Thailand	Satun	1
T10	Malaysia	Petronas Carigali	ANGSI	Angsi-B Slot #6
T3	Thailand	PTTEP	Arthit - WP9	AT-9-C
T4	Thailand	Chevron Thailand	Erawan	C-07
SKD Pelaut	Brunei	Brunei Shell Petroleum	Champion	CP 05
SKD Pelaut	Brunei	Brunei Shell Petroleum	Champion West	CW38
T11	Thailand	Chevron Thailand	Erawan	ERWG-11
T11	Thailand	Chevron Thailand	Erawan	ERWL 22
T11	Thailand	Amerada Hess Ltd.	1074R	ERWL 23
T11	Thailand	Chevron Thailand	Erawan	ERWL 25
T11	Thailand	Chevron Thailand	Erawan	ERWL 34
T11	Thailand	Chevron Thailand	Funan	FUWM 03
T11	Thailand	Chevron Thailand	Funan	FUWM 07
T11	Thailand	Chevron Thailand	Funan	FUWM 08
T11	Thailand	Chevron Thailand	Funan	FUWM 25
T11	Thailand	Chevron Thailand	Funan	FUWM 27
T11	Thailand	Chevron Thailand	Funan	FUWM-02
T11	Thailand	Chevron Thailand	Funan	FUWM-04
T11	Thailand	Chevron Thailand	Funan	FUWM-06
T11	Thailand	Chevron Thailand	Funan	FUWM-09
T11	Thailand	Chevron Thailand	Funan	FUWM-10

De-commissioning Track Record: Well P&A (2)



INSTALLATION	COUNTRY	OPERATOR	FIELD	WELL
T11	Thailand	Chevron Thailand	Funan	FUWM-11
T11	Thailand	Chevron Thailand	Funan	FUWM-12
T11	Thailand	Chevron Thailand	Funan	FUWM-13
T11	Thailand	Chevron Thailand	Funan	FUWM-15
T11	Thailand	Chevron Thailand	Funan	FUWM-17
T11	Thailand	Chevron Thailand	Funan	FUWM-18
T11	Thailand	Chevron Thailand	Funan	FUWM-20
T11	Thailand	Chevron Thailand	Funan	FUWM-21
T11	Thailand	Chevron Thailand	Funan	FUWM-24
T11	Thailand	Chevron Thailand	Funan	FUWM-26
T11	Thailand	Chevron Thailand	Erawan	P&A ERWG-17
T11	Thailand	Chevron Thailand	Erawan	P&A ERWG-20
T11	Thailand	Chevron Thailand	Erawan	P&A ERWG-21
T11	Thailand	Chevron Thailand	Erawan	P&A ERWG-22
T11	Thailand	Chevron Thailand	Erawan	P&A ERWG-24
T11	Thailand	Chevron Thailand	Erawan	P&A ERWG-26
SKD Menang	Malaysia	Murphy	Kikeh	PS21
SKD Menang	Malaysia	Murphy	Kikeh	PS21P A
T18	Thailand	Chevron Thailand	Pakarang	Rig Move to SPWB
T18	Thailand	Chevron Thailand	Pakarang	SPWB Slot-B
T18	Thailand	Chevron Thailand	Pakarang	SPWB Slot-C

De-commissioning Track Record: Well P&A (3)



INSTALLATION	COUNTRY	OPERATOR	FIELD	WELL
T18	Thailand	Chevron Thailand	Pakarang	SPWB Slot-E
T18	Thailand	Chevron Thailand	Pakarang	SPWB Slot-F
T18	Thailand	Chevron Thailand	Pakarang	SPWB Slot-G
T18	Thailand	Chevron Thailand	Pakarang	SPWB Slot-I
T18	Thailand	Chevron Thailand	Pakarang	SPWB Slot-J
T18	Thailand	Chevron Thailand	Pakarang	SPWB Slot-L
T18	Thailand	Chevron Thailand	Pakarang	SPWB Slot-T
T18	Thailand	Chevron Thailand	Pakarang	SPWB Slot-W
SKD Pelaut	Brunei	Brunei Shell Petroleum	AMPA	SWA 129 Abandonment
SKD Pelaut	Brunei	Brunei Shell Petroleum	AMPA	SWA 134
SKD Pelaut	Brunei	Brunei Shell Petroleum	SWA	SWA 137
SKD Pelaut	Brunei	Brunei Shell Petroleum	AMPA	SWA 304st1 abandonment
T7	Thailand	Chevron Thailand	Baanpot	T-7 BAWC P&A programme
T4	Thailand	Chevron Thailand	Erawan	WS 03

Drilling Track Record Last 5 Years



Unit	Work Description	Client	Location	Year
Semi-TAD				
SKD Esperanza	Development Drilling	SSB / SSPC	Malikai Field	2013 – 2018
	Development Drilling	Hess	Okume Field, Equatorial Guinea	2013 – 2015
SKD Jaya	Development Drilling	BP	Chaugauramas Bay, Trinidad & Tobago	2011 – 2016
SKD Berani	Development Drilling	JX Nippon	Helang & Layang Field, Malaysia	2015 – 2016
	Development Drilling	Total E&P	N’Kossa, Congo	2014 – 2015
	Development Drilling	COPI	Block B Natuna Field	2012 – 2014
SKD Setia	Development Drilling	Chevron	Tombua-Landana, Angola	2009 – 2016
SKD Alliance	Development Drilling	Foxtrot	Ivory Coast	2015 – 2016
	Development Drilling	SSB	Jintan Field, Malaysia	2005 – 2015
SKD Menang	Development Drilling	Murphy	Kikeh SPAR, Malaysia	2011 – 2015
SKD Pelaut	Development Drilling	BSP	Various Brunei Fields, Brunei	2009 – 2017
Barge-TAD				
SKD T-20	Development Drilling	CNR International	Espoir Field, Ivory Coast	2014 – 2016
SKD T-19	Development Drilling	PCSB	Various Field, Malaysia	2010 – 2015
SKD T-18	Development Drilling	Chevron	Erawan Field, Thailand	2014 – 2019
SKD T-17	Development Drilling	PTTEP	Arthit Field, Thailand	2014 – 2019
SKD T-12	Development Drilling	Chevron	Lanta & Kaphong Field, Thailand	2011 – 2016
SKD T-10	Development Drilling	PCSB	Terengganu, Malaysia	2014 – 2019
	Development Drilling	Chevron	Gulf of Thailand, Thailand	2012 – 2014
SKD T-9	Development Drilling	PCSB	Offshore Terangganu, Malaysia	2014 – 2019



THANK YOU

